

DIGITAL GLUE SYSTEM CONTROL DGSC-7

The DGSC-7 is a simple, operator friendly, glue application system that can be easily added to any converting machine. Glue volume may be adjusted easily from a rotary knob located on the cabinet's front panel. As the machine speed changes, the control automatically modulates the glue pressure, so that the application remains consistent throughout the order.

System cleanup is easy with the three-way valve which can be switched between glue or water to flush the extruder out between jobs or at the end of the shift.



- The glue pattern is kept in the same position on the sheet regardless of speed, between 0 and 1800 FPM (550 MPM).
- Flow stops automatically when the machine stops, even when a carton is under the extruder, which minimizes boxes sticking together due to excess glue.
- Dynamic glue volume control reduces glue consumption while also minimizing tack time.
- Eliminates common problems such as glue slinging.
- No tools are needed to remove or swap out the extruder, reducing end-of-shift or end-of-day cleanup time.
- Control Cabinet Dimensions: 14" x 16" x 6.5 (35.5cm x 40.6cm x 16.5cm)
- Pressure Control Dimensions: 16.25" x 14.5" x 7.75" (42cm x 37cm x 20cm)
- Power Required: 120V 50/60Hz or 220V 50/60Hz

GLUE APPLICATOR ASSEMBLY

Two applicator sub-assemblies are provided with each system, allowing for quick changeovers when switching from top down or bottom up application. The applicators are available in a wide variety of sizes, covering a multitude of order requirements. Applicators range from one single bead all the way up to a 4" wide, 16 bead pattern. Standard applicators extrude 4 glue beads, spaced at 1/4" apart. Options are available for special circumstances, such as 1/8" spacing between beads or larger diameter extrusion holes.



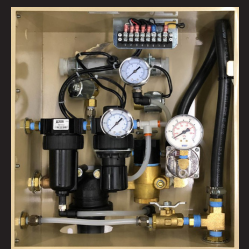
GLUE PUMP

The glue pump provides long, reliable service, which may be used to feed one or multiple glue control systems. The glue pump uses filtered air from the glue pressure control cabinet, with no electrical power required to operate the pump. Neoprene diaphragms are standard, but Teflon diaphragms are also offered as an option.



GLUE PRESSURE CONTROL

The Pressure Control System is a windowed enclosure which contains an air filter, a glue filter, dynamic air pressure regulation, and dynamic glue pressure regulation. The glue pressure (and in turn glue volume), automatically modulates as production runs. The pressure applied is dependant on the machine speed and glue pressure adjustment knob on the operator control cabinet door. The pressure regulating design prevents over gluing when the machine stops.



COPAR Corporation

5744 West 77th Street Burbank, Illinois 60459 U.S.A. Telephone (708) 496-1859 Fax (708) 496-0079
Email: Info@Copar.com www.Copar.com

