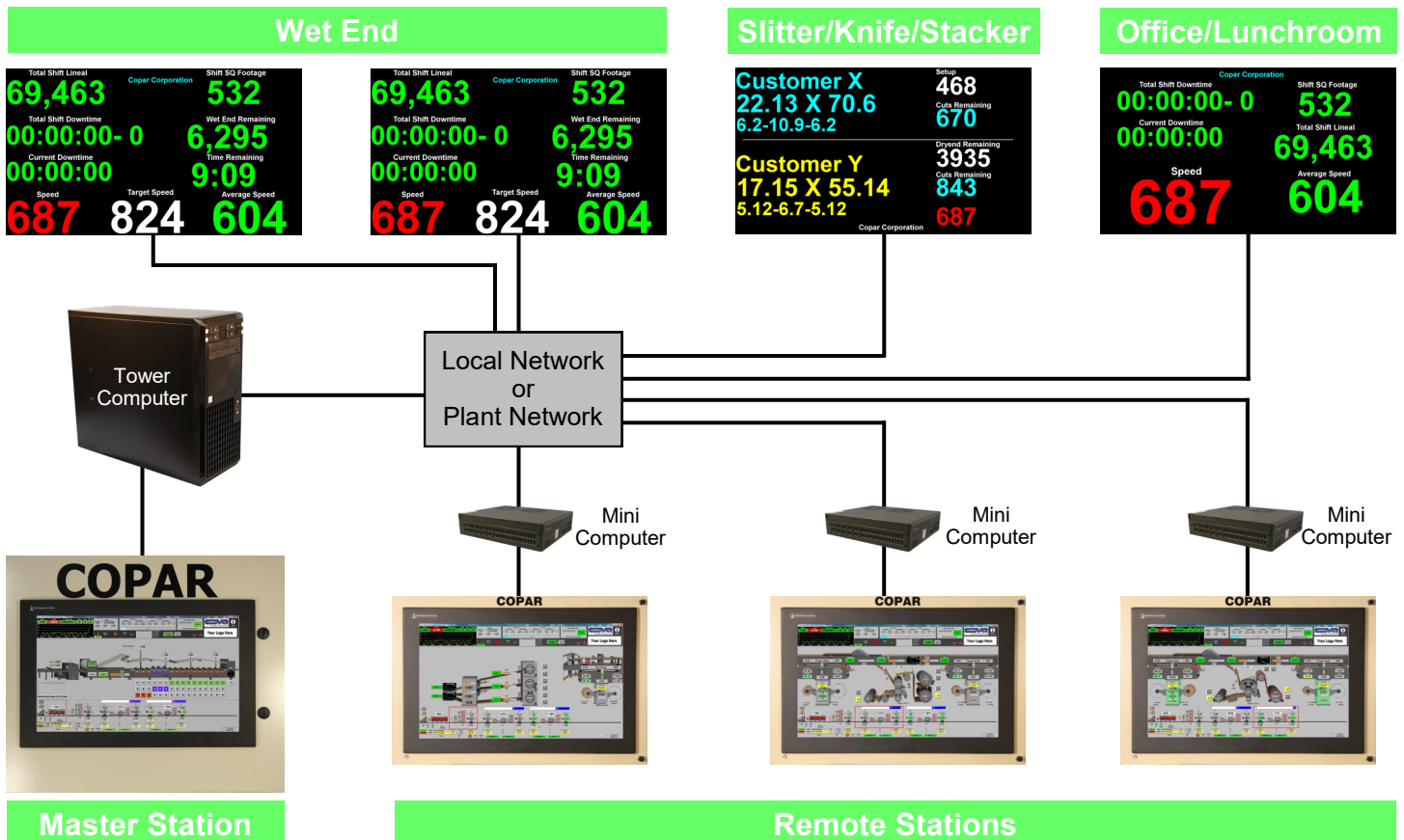


PRODUCTION DISPLAYS AND OPERATOR STATIONS

ProductionMaster LED TV screens help plant employees become more aware of production throughput. Mounted above the production floor, the large screens encourage operators to reach production goals, while minimizing machine downtime.

- Wet End screens display the current grade remaining, shift lineal/downtime, and current/average/target speed.
- Dry End screens display sheet/score dimensions, cuts/lineal remaining, and current speed.
- Common installations locations:
 - Two screens, back to back, overhead near the heating section.
 - Near the stacker discharge where operators check the final sheet dimensions.
 - Front Offices, Lunchrooms, or Maintenance Departments.



The **Master Station** and **Remote Stations** allow the operators to perform routine tasks.

- The Master Station is the interface between the PLCs, Remotes Stations, ProductionMaster Overhead TVs, and scheduling system. It also serves as a data collection and logging center for production statistics.
- Remote Stations are fully functional operator stations. Each screen operates independently, so different tasks can be performed simultaneously at each remote station.
- Remotes can be easily added for operator efficiency close to their work areas. Recommended remote locations include one near the glue station, and one near each singlefacer.



COPAR SOLUTIONS™

5744 W. 77th Street • Burbank, IL, USA • 708-496-1859 • info@coparsolutions.com



Production Displays

The Display

The Copar ProductionMaster is a highly visible motivator that displays production statistics for operators and supervisors.

- Large flat panel LED TV displays.
- 1920x1080 HD resolution.
- 60 inch screens (or larger) are recommended for easy viewing, but any size can be used as long as it is capable of 1920x1080 resolution.
- An unlimited number of displays can be installed within range of the Copar local or plant network.
- Wet End (roll priority) or Dry End (finished sheet priority) data can be displayed.
- Screens can be installed in supervisor offices, lunchrooms, and/or in the maintenance shop.
- The displays integrate with existing Copar systems or can be purchased as a stand alone package.

Easy to Read Colors

The ProductionMaster indicates whether or not production goals are being met. Production goals are configured based on plant specifications.

- **GREEN** – Above production goals
- **RED** – Below production goals

Benefits and Features

- Large screens help operators track order progress more efficiently
- Improves production and downtime awareness
- Motivates employees to reach production goals
- The displays are customized per plant
- Low power consumption

Wet End Remaining

43,007

Time Remaining

2:11:31

Speed

327

Your Company
Logo

16:38:09



Total Shift Lineal

41,739

Current / Total Downtime

00:05:02- 2

Target Speed

493

Width: **85** Grade: **EL167P EF070 EL167P EF050 EL167P**

Think Green

Copar uses LED HDTV displays for low power consumption. These screens can withstand higher temperatures and have a longer life expectancy.

The green numbers on the display indicate production targets are being met. Green numbers mean more profit and productivity.

Keep it Green

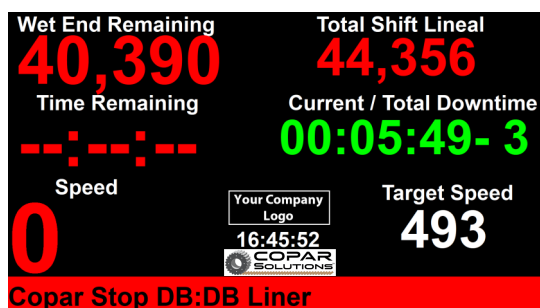
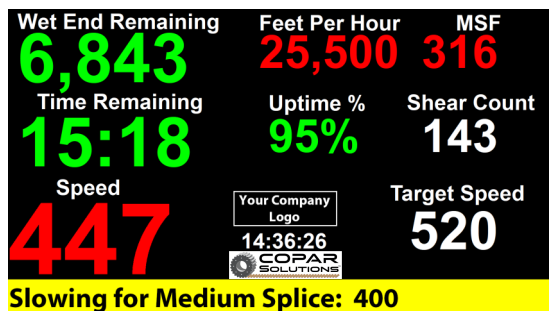
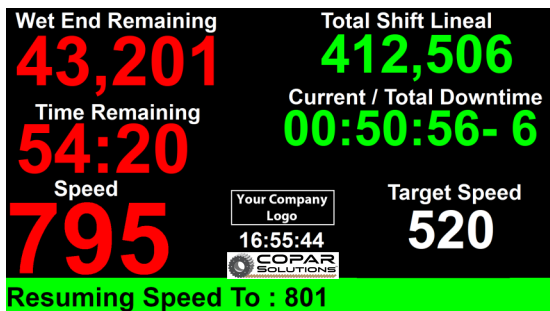
Keeping the numbers on the display green is a good mentality to introduce to operators and managers.

Start a healthy competition between shifts to see who can "Keep It In the Green".

Customized Displays

Information can be added, moved, or removed on the screen easily upon request. Display options include:

- Current Speed
- Average Speed
- Target Speed
- Current Downtime
- Total Downtime (with number of stops)
- Lineal Produced
- Square Feet/Meters Produced
- Average Lineal per Hour
- Uptime %
- Shear Count
- Wet End Lineal Remaining
- Wet End Time Remaining
- Current Grade and Width
- Current Date and Time
- Company Logo and Site Location
- Finished Sheet Information (optional)
- Customer Name (s)
- Cuts Remaining
- Sheet & Score Dimensions
- On-Screen Messages including when Copar issues Fast, Slow, or Stop commands

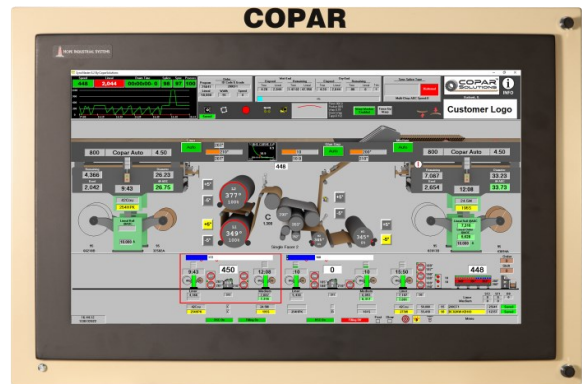


Additional Remote Stations

The new Remote Station interfaces with **Sync Master 8.3** systems. The Remote is a compact operator station that duplicates all the functions of an existing Master Stations. The Remote station consists of a stand alone mini computer, 23" 1920x1080 resistive LCD touchscreen, and UPS Battery Backup in a NEMA Type 4X industrial grade enclosure.

Fully Functional Stations

- Remote stations operate independently from each other. Each station can view different screens and make machine adjustments without affecting one another.
- Each station is capable of performing multiple functions such as arming for synchronized splice, changing roll splice diameters, adjusting paper temperature or starch settings, as well as viewing production history logs.
- Each station can be individually configured to lock out specific functions (prevent changing splice diameter or changing goal temperatures, etc).



Because of the compact design, the panels can be mounted to a wall, a support beam, above an existing operator console, or can be installed with an optional Copar floor mounting stand. Remotes are typically located near each singlefacer, and one near the stacked doublebacker preheaters.

Features and Benefits

- Increase operator efficiency by having consoles close to their work stations.
- Each station can be used by maintenance for troubleshooting.
- The included resistive touchscreen is designed for industry, which allows operators to keep work gloves on when making adjustments at the screen.
- Solid state hard drives are utilized with NO internal moving parts for increased reliability and high heat tolerance.
- Compact design allows mounting flexibility where space is limited.
- UPS Battery Backup is included for protection during power surges and outages.
- An internal GFCI outlet is included for ground fault protection.

